

**+28V 3.81mm terminal block**  
**OPERATIONAL RANGE: 26-30V**

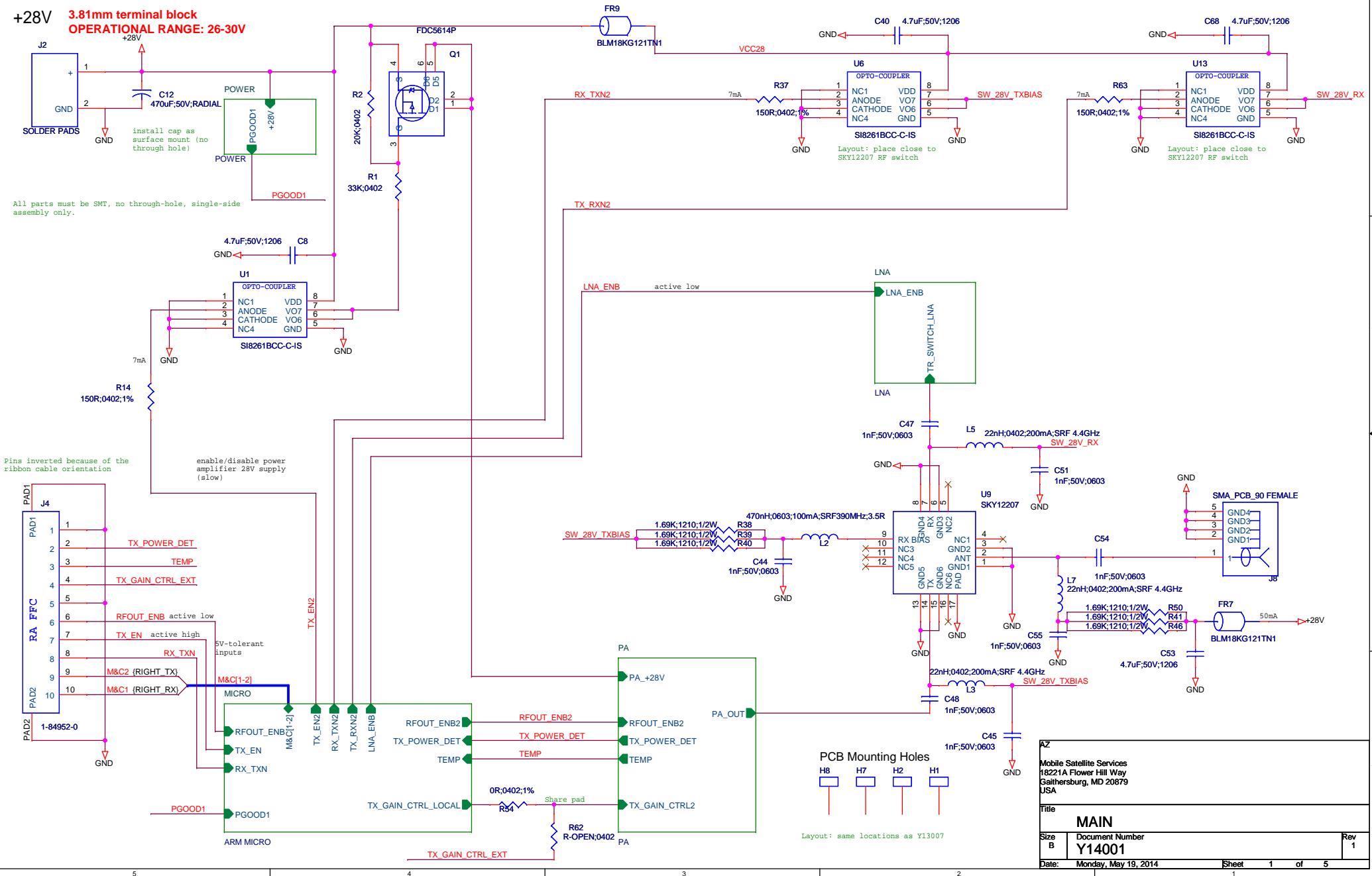
All parts must be SMT, no through-hole, single-side assembly only.

Pins inverted because of the ribbon cable orientation

enable/disable power amplifier 28V supply (slow)

5V-tolerant inputs

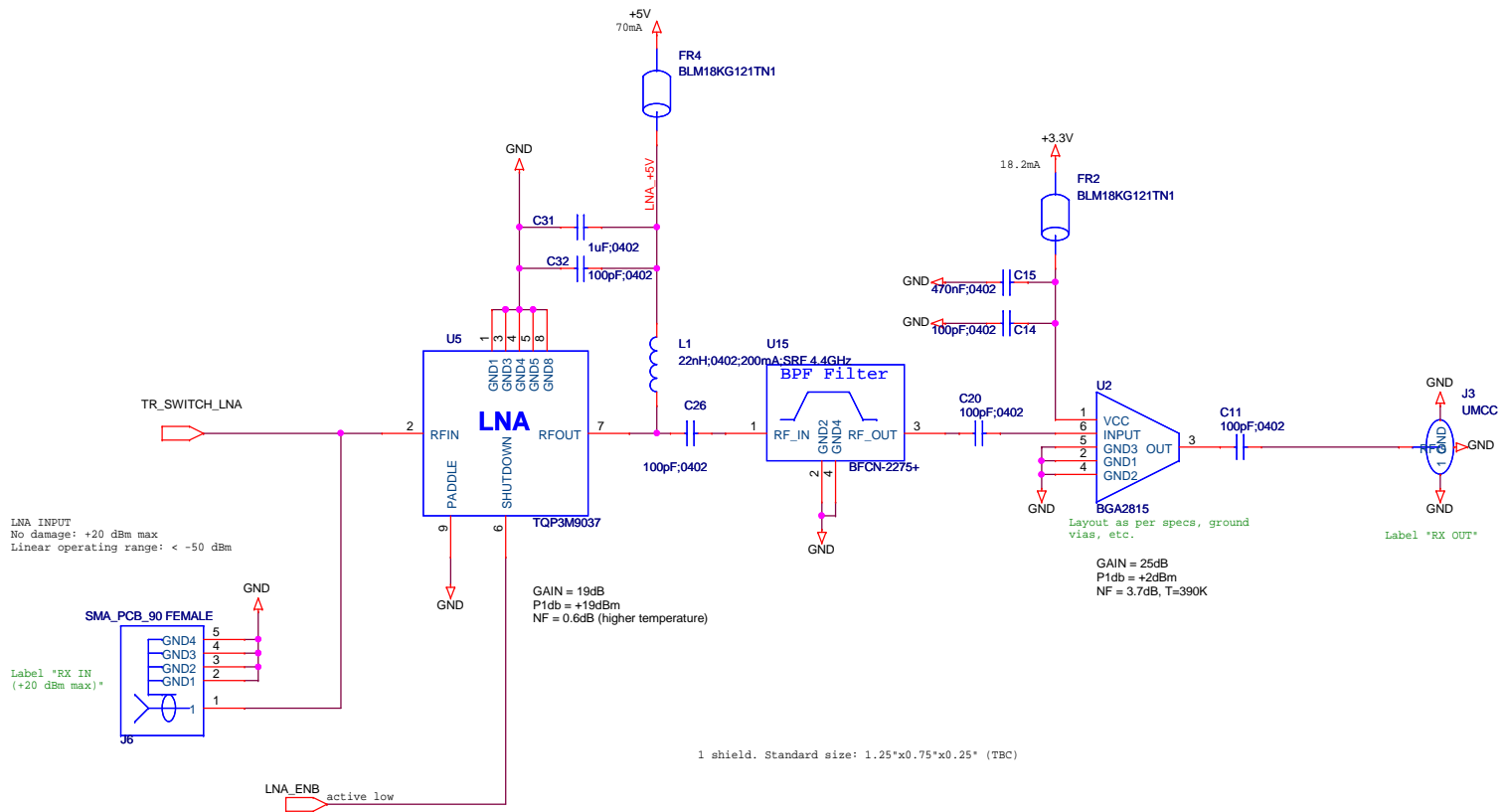
ARM MICRO



|       |                      |  |        |
|-------|----------------------|--|--------|
| AZ    |                      | Mobile Satellite Services<br>18221A Flower Hill Way<br>Gaithersburg, MD 20879<br>JSA |        |
| Title |                      | MAIN   |        |
| Size  | Document Number      | Rev  |        |
| B     | Y14001               | 1  |        |
| Date: | Monday, May 19, 2014 | Sheet  | 1 of 5 |

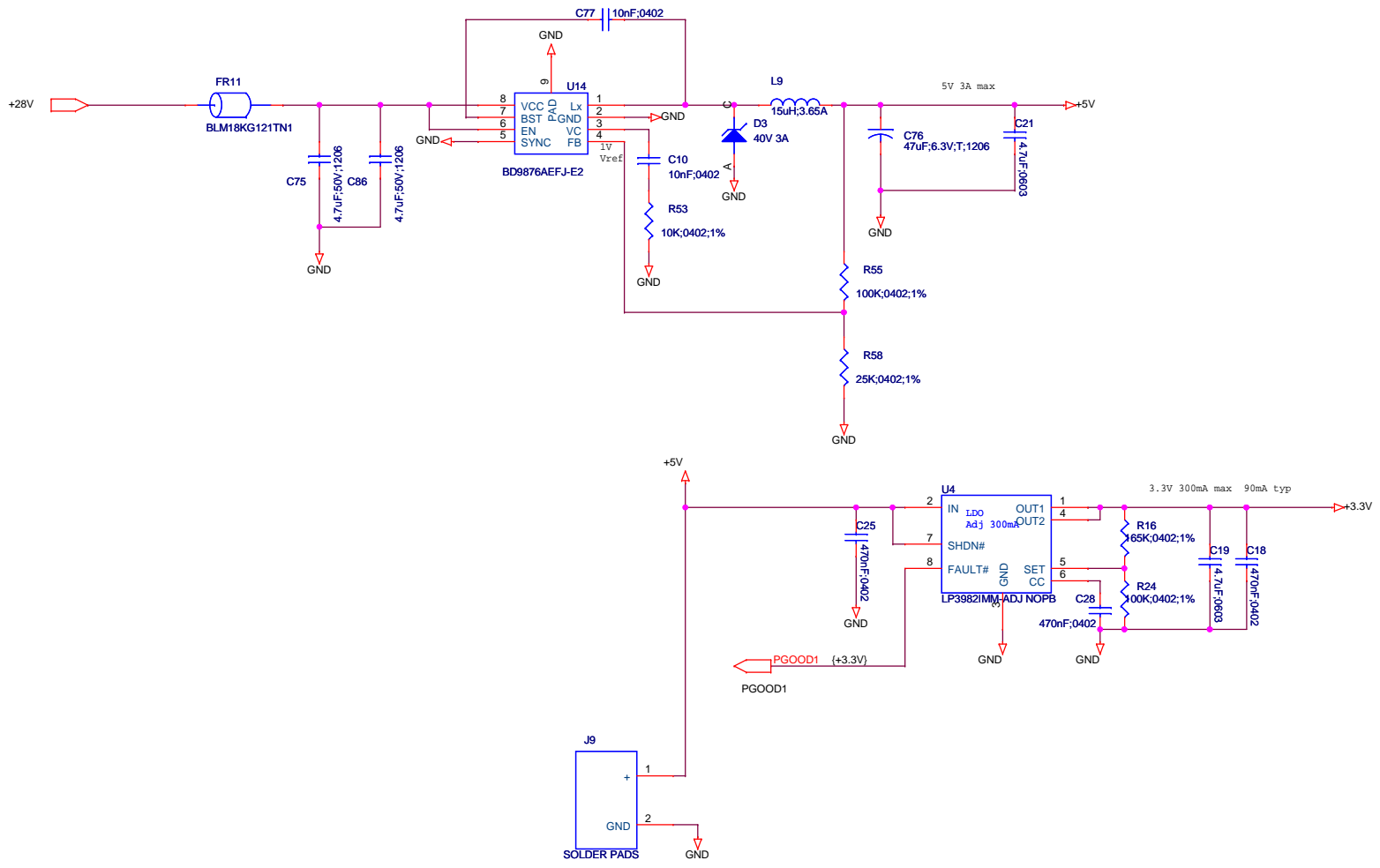
Layout: same locations as Y13007





|  |                        |
|--|------------------------|
| AZ   |                        |
| Mobile Satellite Services<br>18221A Flower Hill Way<br>Gaithersburg, MD 20879<br>JSA |                        |
| Title  |                        |
| LNA  |                        |
| Size B   | Document Number Y14001 |
| Date: Monday, May 19, 2014   | Rev 1                  |





Label: +5V DC OUTPUT

|  |                      |
|--|----------------------|
| AZ   |                      |
| Mobile Satellite Services<br>18221A Flower Hill Way<br>Gaithersburg, MD 20879<br>JSA |                      |
| Title  |                      |
| <b>POWER</b>   |                      |
| Size   | Document Number      |
| B  | Y14001               |
| Date:  | Monday, May 19, 2014 |
| Sheet  | 5 of 5               |
| 1  |                      |